



DESCRIPTION

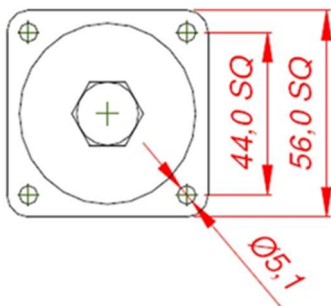
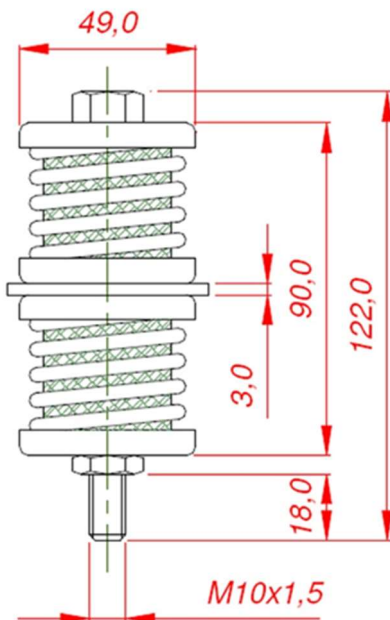
The mounting consists of steel springs and resilient knitted stainless steel mesh cushions.

APPLICATION

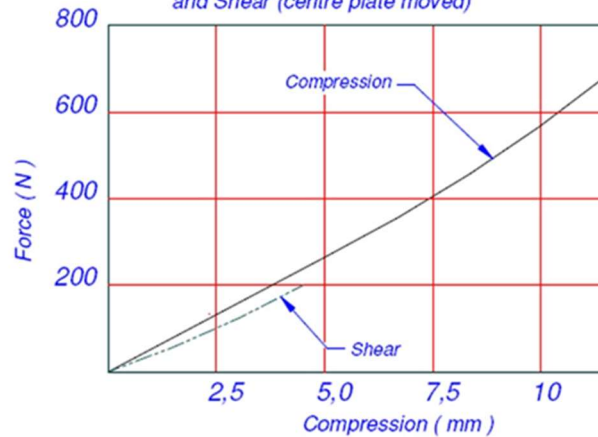
These mounts have been designed for central mounting with long travel and low frequency isolation. Applications include suspension of exhaust pipes, silencers, manifolds. There is no alteration in characteristics between -70°C and +175°C.

DYNAMIC CHARACTERISTICS

| | |
|--------------------|----------|
| Natural Frequency: | 5 – 7 Hz |
| Amplitude | +/- 1 mm |



Typical Performance Curve for W9300-3 as a function of applied load in Compression and Shear (centre plate moved)



| Part Number | Static Load, kg |
|-------------|-----------------|
| W9300-1 | 10 – 15 |
| W900-2 | 15 – 25 |
| W9000-3 | 25 – 50 |