



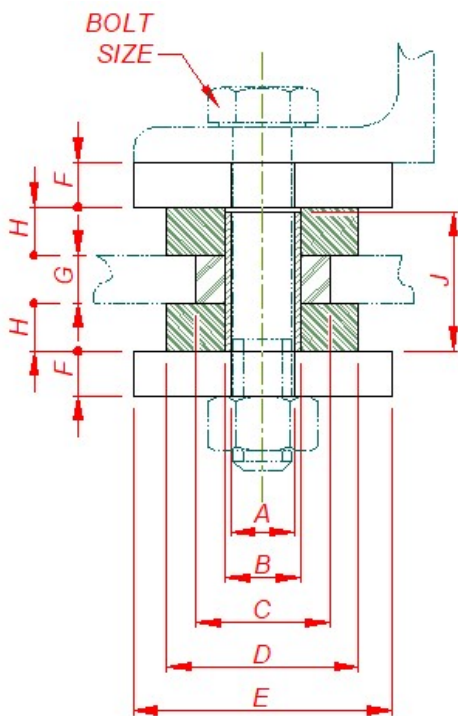
DESCRIPTION

The mounting consists of rubber bushes and steel washers and distance sleeve. The rubber is protected with a flexible paint and the steel elements are protected with a zinc plated finish.

APPLICATION

The type 'R' mount is an anti-vibration mount.

The preferred mounting arrangement is with the bolt centre line vertical, as shown below. However, in cases where the centre of gravity overhang would be small, the mount can be oriented in any direction. When assembled with an appropriate linking cage, the 'R' mount is known as an 'S' mount (sizes 2, 4, 6 only).



Part No.	NATO Stock Number(s)	Mount size no.	Supported Nominal Load kg
15/401	5340-99-961-2289	1	5
	5340-99-734-9847		
	5340-99-347-0389		
15/402	5340-99-306-2879	2	10
	5340-99-730-6589		
	5340-99-958-2927		
15/403	5340-99-051-7346	3	18
	5340-99-450-7839		
15/404	5340-99-374-7173	4	27
	5340-99-300-0897		
	5340-99-341-4301		
15/405	5340-99-660-7573	5	36
	5340-99-327-7499		
15/406	5340-99-783-2099	6	45

Part No.	Mount size no.	Supported Nominal Load kg	Dimensions, mm									
			A	B	C	D	E	F	G	H	J	Bolt Size
15/401	1	5	13	17	24	32	42	10	16	10	34.5	M12
15/402	2	10	13	17	27	37	50	10	16	14	42.5	M12
15/403	3	18	17	21	30	40	52	13	16	14	42.5	M16
15/404	4	27	17	21	35	50	68	13	16	16	46.5	M16
15/405	5	36	21	25	44.5	60	80	15	16	16	46.5	M20
15/406	6	45	21	25	44.5	64	86	15	16	16	46.5	M20