



DESCRIPTION

The Type J Mount is a curved metal strap designed to yield at a predetermined load in any direction under shock.

The mount is self-contained, needing no separate or additional associated devices (i.e. decelerators). It is cost effective and requires little maintenance because its zinc coated surface protects it against corrosion.

APPLICATIONS

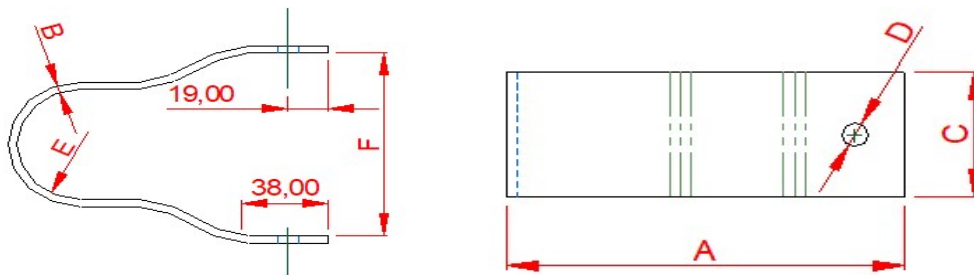
Suitable for shock mounting applications, where alignment with either equipment or ships structure need not be maintained after shock, and where vibration protection or isolation is not a requirement.

The mounted item may be displaced from its original position by plastic yielding of the mounts as a result of shock. But it may be possible to regain shock protection, as an emergency measure, by forcing the mounts back into their original shape.

The Type J Mount is commonly employed for the shock protection of robust electrical distribution equipment, including switch and control gear.

INSTALLATION

The J Mount can be installed in any orientation, allowing installation to the deck, deck head, or bulkhead as required.



Part Number	NATO Stock Number	Mount Size No.	Supported Mass Range	Dimensions, mm					
			kg	A	B	C	D	E	F
17/001	5340-99-539-6795	03A	2 – 5	150	2	55	M8	30	95
17/002	5340-99-539-6794	02A	5 – 10	152	3	55	M8	30	95
17/003	5340-99-539-6793	01A	10 – 20	153	4	55	M10	30	95
17/004	5340-99-533-2588	1A	20 – 35	154	5	70	M10	30	95
17/005	5340-99-533-2589	2A	35 – 45	154	5	90	M10	30	95
17/006	5340-99-533-2590	3A	45 – 60	155	6	85	M12	30	95
17/007	5340-99-533-2591	4A	60 – 80	155	6	105	M12	30	95
17/008	5340-99-533-2592	5A	80 – 115	157	8	95	M16	30	95
17/009	5340-99-533-2593	6A	115 – 180	159	10	85	M20	30	95