

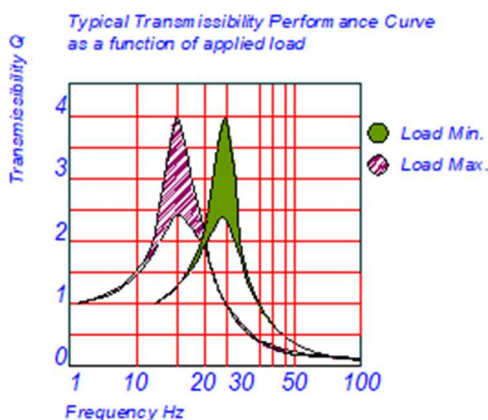
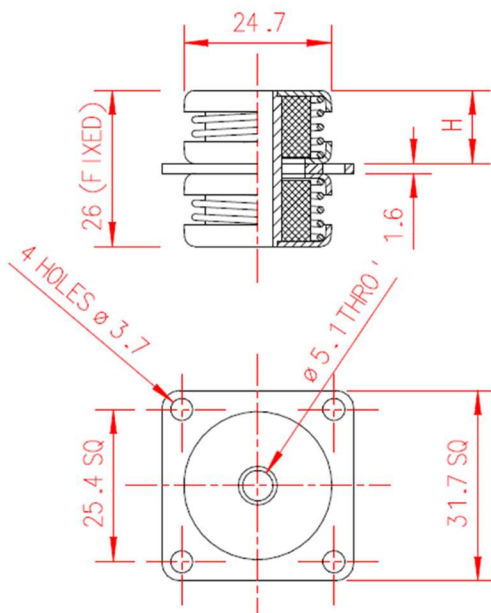


### DESCRIPTION

The mounting consists of stainless steel springs, centre tube and resilient knitted stainless-steel pads. The mounting plate and retaining caps are made from anodised aluminium alloy. **Weight approximately 22 g**, depending upon model number.

### APPLICATION

Shock and Vibration Isolation of aerospace, marine and mobile applications in military and civil roles.



### DYNAMIC CHARACTERISTICS

Natural Frequency:	15 to 25 Hz vertical
	12 to 20 Hz transverse
Transmissibility:	4:1

### LOADING LIMITATIONS

Mechanical resistance is equal to continuous acceleration of 10g.

There is no alteration in characteristics between -70°C and +175°C.

Size	Load Range, kg
K171-6A	0.11 – 0.25
K171-3A	0.20 – 0.40
K171-18A	0.35 – 0.75
K171-14A	1.00 – 1.55
K171-15A	1.20 – 2.00

Load direction	Nominal Height, H mm
Compression	9
Tension	15

### Note:

Historically the K171 series was available with an oval base, designated with a 'B' suffix. The standard square base version was re-designated with an 'A' suffix. The oval version is no longer available.