



DESCRIPTION

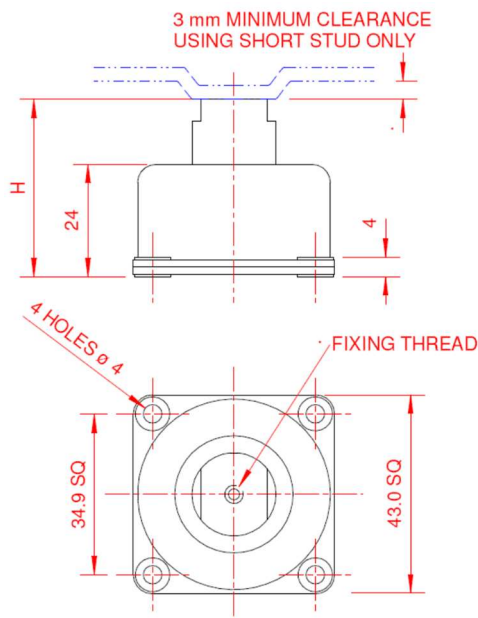
The mounting consists of stainless steel springs and resilient knitted stainless-steel pads. The housing and base are made from anodised aluminium alloy. Securing is through tin plated brass eyelets. **Weight approximately 40 grams.**

APPLICATION

Shock and Vibration Isolation of aerospace, marine and mobile applications in military and civil roles.

DYNAMIC CHARACTERISTICS

Ratio between transverse and axial stiffness (vertical) = approximately 1 to 2.5	
Natural Frequency:	7 to 11 Hz vertical
	4.5 to 7 Hz transverse, depending on load, for a displacement input +/- 0.35mm
Displacement input:	+/-0.35mm
Transmissibility:	<4:1



LOADING LIMITATIONS

Just prior to abutting the snubber, load corresponds to a continuous acceleration of at least 2g. Loads corresponding to at least 10g may be accepted without affecting the mount performance. Maximum displacement of the suspended unit under limiting loads +/-5 mm. There is no alteration in characteristics between -70° C and +175°C.

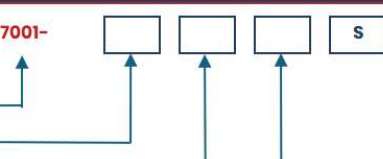
Part Number Configuration

Series → 7001-

Size → []

Thread → A = 8-32 UNC-2B
C = M4 x 0.7

Stud Length → []



Ordering Example

7001-

3

C

S

S

Size no.: 3, 0.7 - 1.5 kg
Thread: C, M4 x 0.7
Stud Length: S, Short

Note: The S suffix denotes the standard square base.

Size	Load Range, kg
1	0.25 - 0.45
2	0.35 - 0.80
3	0.70 - 1.50
4	1.00 - 2.55
5	2.55 - 4.60

Height, H	Short Stud	Long Stud
Free	35	38
Loaded	30	33