



DESCRIPTION

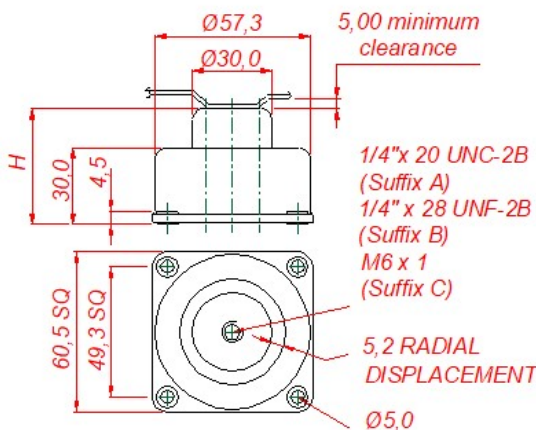
The mounting consists of stainless steel springs and resilient knitted stainless-steel pads. The housing, mounting cap and base are made from anodised aluminium alloy. Securing is through tin plated brass eyelets. **Weight approximately 115 grams.**

APPLICATION

Used for vibration isolation of equipment on fighting vehicles. This multi axial mounting is designed with abutting snubbers. Its dynamic characteristics are identical in both axial (compression) and radial directions. Applied in aerospace, marine, military and industrial roles.

DYNAMIC CHARACTERISTICS

Natural Frequency:	15 to 30 Hz vertical
Maximum displacement input:	+/- 0.5mm.
Transmissibility:	<4:1
Limit loading to 6.8 kg for vehicle and transit case applications.	



LOADING LIMITATIONS

Part No. 1202-10 is recommended for use on stationary applications only. Loads corresponding to at least 10 g may be accepted without subsequently affecting the mount performance.

Maximum displacement of the suspended unit under limiting loads:	Vertical +/- 5.5mm
	Radial +/- 3.5mm
No alteration in characteristics between -70°C and 175°C.	

Part Number Configuration

Series: 1202-

Size: [] [] []

Thread: A = 1/4"-20 UNC, B = 1/4"-28 UNF, C = M6 x 1.0

Stud Length: [] [] []

Ordering Example

1202- [9] [C] [L]

Size no.: 9, 8.15 – 18.15 kg
Thread: C, M6 x 1.0
Stud Length: L, Long

Height, H	Short Stud, S mm	Long Stud, L mm
Free	34.9	39.7
Loaded	33.3	38.0

Size No.	Load Range, kg
1202-6	1.15 – 2.70
1202-7	2.50 – 5.70
1202-8	4.55 – 9.10
1202-9	8.15 – 18.15
1202-10	20.40 – 34.00